



2 Hawker Drive, Brockworth, Gloucester, GL3 4ZJ

£1,350 Per Calendar Month



- Available from 25/06/2024
- 3 Bed Mid Terrace
- Unfurnished
- Motorway access
- Brockworth
- EV Charger

Available from 25/06/2024

'The Ashford' is a three bedroom mid terraced property with an open plan kitchen/diner area with utility room, large separate lounge and ground floor WC. The first floor boasts three bedrooms and 2 bathrooms with the mast bedroom being en-suite. All carpets, light fittings and curtains provided and there is off road parking and landscaped rear garden.

THE PROPERTY

Available from 25/06/2024

A recent survey by a house building federation shows that new houses are 65% more efficient than older properties of the same size!

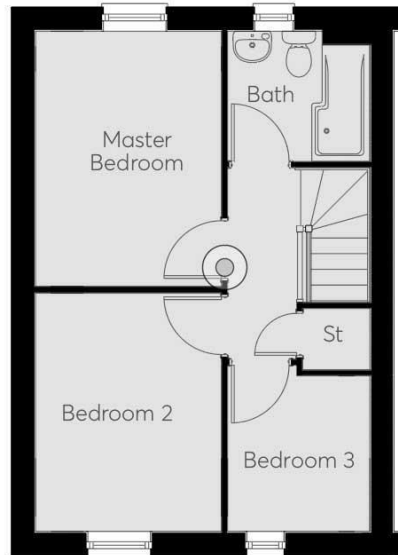
Hawker Drive in Brockworth is another brand-new development by Eden Homes, one of the UK leading house builders known for their quality and attention to detail.

Brockworth is a great area being located close to excellent road links, plentiful retail and leisure services along with being close to employment areas. The area has good schools and is suited for anyone which wants to be located close to services and/or needs to commute the cities Gloucester, Cheltenham or even Bristol. Gloucester and Cheltenham are within a 15- minute drive As a company we always strive to create communities rather than developments and have equipped the development with additional features increasing the desirability of the development.

'The Ashford' is a three bedroom mid terrace property with an open plan kitchen/diner area with, large separate lounge and ground floor WC. The first floor boasts three bedrooms and 1 bathroom. All carpets, light fittings and curtains provided and there is off road parking with Electric Vehicle charging point and landscaped rear garden.

Please note external finishes may vary from site to site. Photos are for marketing purposes only

Council tax and EPC are waiting to be confirmed



SITUATION

Directions