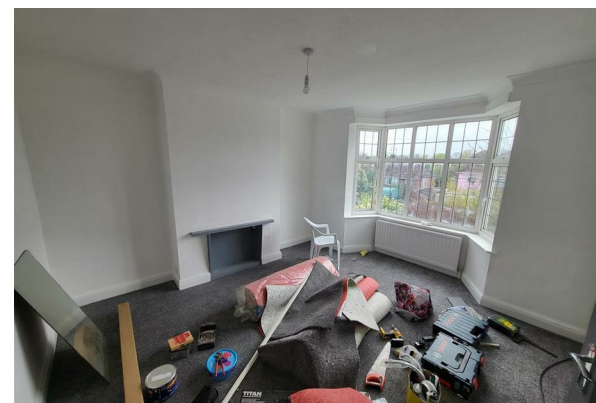
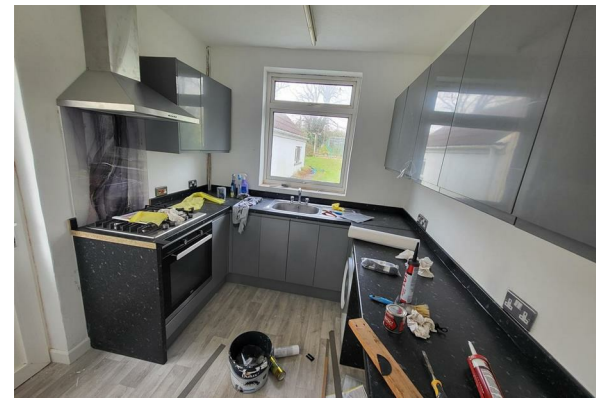




TO LET



9a Welsford Road, Bristol, BS16 1BS

£2,900 Per Calendar Month



- Ideal For Companies or Sharers
- Large Driveway For Off Street Parking
- Being Refurbished
- Great Location
- Large Front and Back Gardens
- Available Mid April



Directions

THE PROPERTY

****Ideal For Companies or Sharers****

Urpads are delighted to offer this spacious four bedroom home in Bristol. Close to local amenities and major road links this is a must see!

The property has undergone extensive refurbishment including a brand new fitted kitchen.

Property comprises of large entrance hallway which leads to one of the large bedrooms, living room, shower/wet room and kitchen. The upstairs consists of two large bedrooms a medium sized room and bathroom.

SITUATION