



TO LET



6 Broadhidley Drive, Bartley Green, Birmingham, B32 3QN

£315,000



THE PROPERTY

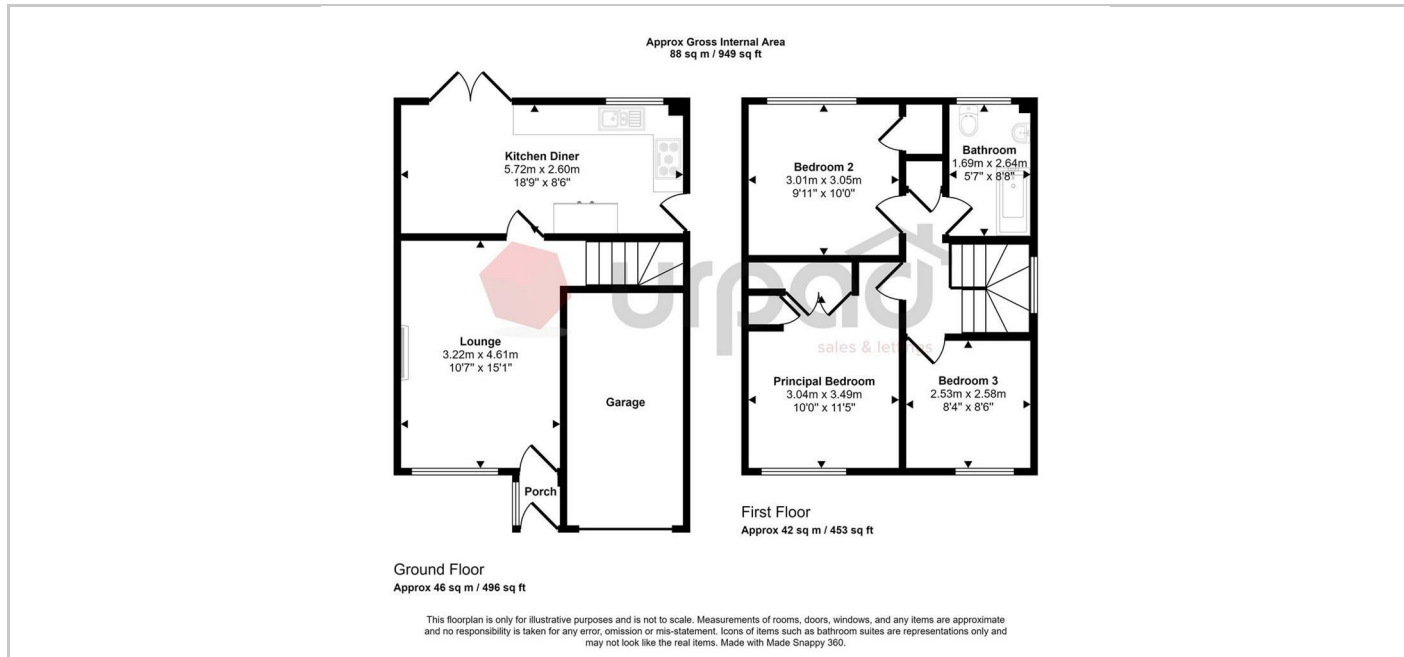
Welcome to Broadhidley Drive, Birmingham - a charming location that could be the perfect setting for your new home. This amazing three-bedroom semi-detached property boasts spacious living space, offering comfort and style in abundance.

As you step inside, you'll be greeted by a warm and inviting reception room, perfect for relaxing with family or entertaining guests. The property features three well-appointed bedrooms, providing ample space for a growing family or those in need of a home office.

The house comes with a modern bathroom, ensuring convenience and comfort for all residents. Additionally, the driveway can accommodate up to 3 cars, along with an integral garage, providing parking space for a total of 4 vehicles - a rare find in this area.

Whether you're looking for a cozy family home or a stylish property with room to grow, this semi-detached house offers the perfect blend of comfort and practicality. Don't miss out on the opportunity to make this house your own and enjoy the convenience of living in such a desirable location.

SITUATION



Directions