



86 Moravian Road, Bristol, BS15 8NF

£270,000



- Townhouse
- Great Location
- Master En-Suite
- Three Bedrooms
- Off Road Parking
- Close to Kingswood High Street

THE PROPERTY

Welcome to your dream home! This delightful three-bedroom terraced townhouse located on Moravian Road in Bristol and offers a perfect blend of modern comfort and classic charm.

As you step inside, you are greeted to a cozy living area, ideal for relaxing or entertaining guests. The large windows fill the room with natural light, creating a warm and inviting atmosphere.

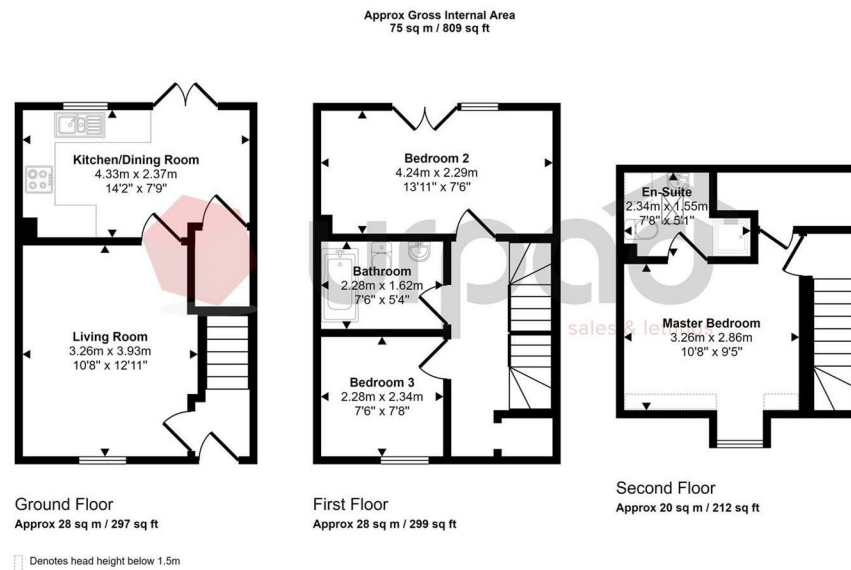
The heart of the home is the well-appointed kitchen, featuring contemporary appliances, ample storage space, W.C. and a dining area that's perfect for family meals. From here, you can access a private, low-maintenance garden, an ideal space for outdoor gatherings or quiet moments in the sun with parking to the rear.

The first level, you will find two bedrooms, one a large double the other a medium sized bedroom each offering plenty of natural light along with family bathroom in the middle.

The master bedroom is on the top level and features an en-suite bathroom, providing a personal retreat for relaxation.

This property is well-positioned in a friendly neighbourhood, with excellent local amenities, schools, and parks within walking distance. Bristol's vibrant City Centre is just a short commute away, offering a wide range of shopping, dining, and entertainment options.

With its blend of space, style, and location, this charming townhouse on Moravian Road is a must-see. Don't miss the opportunity to make this lovely property your new home! Contact us today to arrange a viewing.



This floorplan is only for illustrative purposes and is not to scale. Measurements of rooms, doors, windows, and any items are approximate and no responsibility is taken for any error, omission or mis-statement. Icons of items such as bathroom suites are representations only and may not look like the real items. Made with Made Snappy 360.

SITUATION

Directions