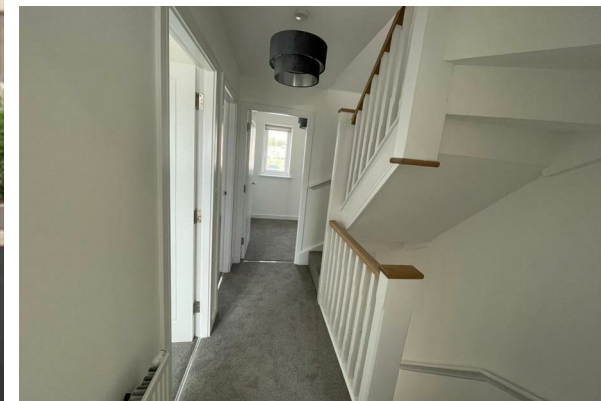




TO LET

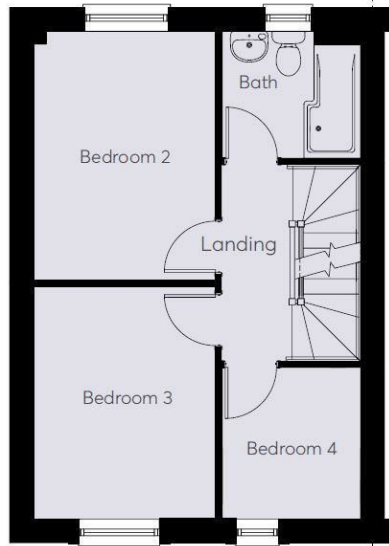


137 Waun Fawr, Cwmrhydyceirw, Swansea, SA6 6FQ

£1,300 Per Calendar Month



- Available November 2024
- Semi Detached
- New Build
- Minimum Term: 12 months
- Unfurnished
- Four Bedrooms
- Great Location
- Two Bathrooms
- Energy Efficient



Directions

THE PROPERTY

STUNNING NEW BUILD HOME - VERY ENERGY EFFICIENT

Coming to the market with availability from November 2024 is this stunning four bedroom, three storey semi-detached house that is in close proximity to the DVLA, Morrision Hospital and the M4 for commuting in and out of the Swansea area.

Newly built in 2023, this gorgeous property provides 4 good sized bedrooms, a fully fitted kitchen complete with white goods, a lounge, a family bathroom, en-suite to master, a downstairs WC and a low maintenance garden.

In addition, these properties have parking for 2 cars with one of the spaces having access to an electric vehicle charging point.

Viewing is strongly recommended as these will let extremely quickly.

Images are of a similar 4 bedroom property by the same developer

SITUATION