



21 Beacon Tower*, Fishponds Rd, Bristol, BS16 3HQ

£240,000



- Stunning City Views
- Modern Throughout
- Great Location
- Two Double Bedrooms
- Open Plan Living Room/Kitchen
- Off Road Parking

THE PROPERTY

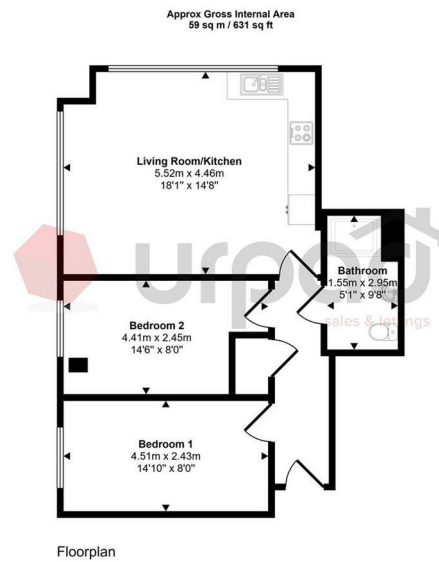
Stunning Two-Bedroom Apartment with City Views in the Iconic Beacon Tower
Experience city living at its finest in this exceptional two-bedroom apartment situated on the fourth floor of the iconic Beacon Tower in Fishponds Road, Bristol.

This modern apartment boasts:

- * Breath-taking panoramic views: Enjoy stunning vistas of the Bristol cityscape from your private balcony.
 - * Spacious open-plan living: A contemporary living area seamlessly combines a stylish kitchen, dining, and lounge space, perfect for entertaining guests.
 - * Two double bedrooms: Offering ample space and natural light, both bedrooms provide a tranquil retreat.
 - * Modern bathroom: Featuring contemporary fixtures and fittings.
 - * Secure entry and lift access: Ensuring peace of mind and easy access to your apartment.
 - * Allocated parking space: Convenient and secure parking for your vehicle.
- Beacon Tower is ideally located within easy reach of local amenities, excellent transport links, and the vibrant City Centre of Bristol.
Contact us today to arrange a viewing and discover your dream city living experience.

Key Features:

- * Two bedrooms
- * Fourth floor
- * Stunning City views
- * Open-plan living
- * Modern bathroom
- * Secure entry
- * Lift access
- * Allocated parking



This floorplan is only for illustrative purposes and is not to scale. Measurements of rooms, doors, windows, and any items are approximate and no responsibility is taken for any error, omission or mis-statement. Icons of items such as bathroom suites are representations only and may not look like the real items. Made with Made Snappy 360.

SITUATION

Directions