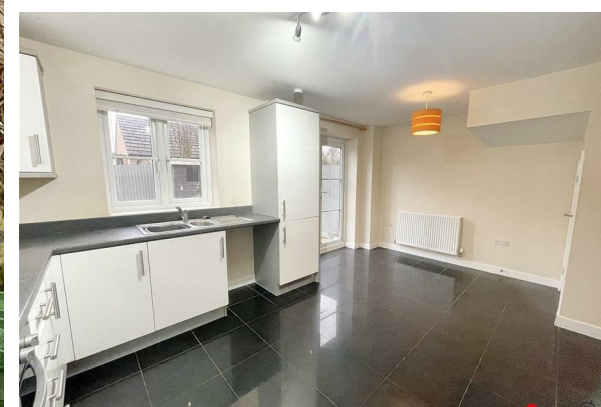




TO LET



16 Park View, Corby, Northamptonshire, NN17 5ER

£300,000



Available from 06/05/2022

- Superb location
- Three storey townhouse
- Gas central heating
- Excellent transport links
- Driveway and garage parking
- In great condition

THE PROPERTY

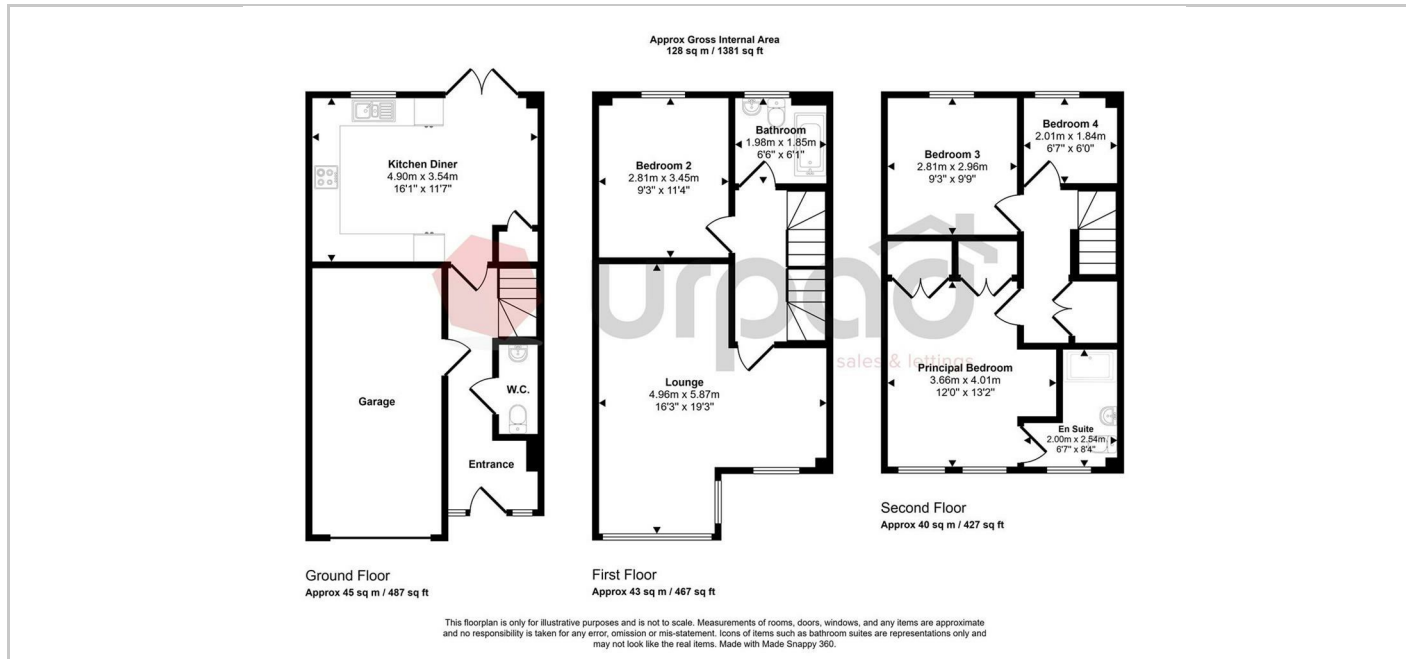
Nestled in the desirable area of Park View, Corby, this modern semi-detached townhouse offers a perfect blend of comfort and convenience and boasts a contemporary design that is both stylish and functional.

The house features three well-proportioned bedrooms and a fourth smaller but very useful room, providing ample space for families or those seeking extra room for guests or a home office. With three bathrooms, including a convenient ground floor WC, morning routines and family life are made effortless.

The property benefits from driveway parking as well as a garage, ensuring that you and your guests have easy access. Its excellent location means you are well-connected to local amenities and transport links, making commuting and exploring the surrounding area a breeze.

This townhouse is not just a house; it is a home that offers a comfortable lifestyle in a vibrant community. Whether you are a growing family or a professional seeking a peaceful retreat, this property is sure to meet your needs. Don't miss the opportunity to make this lovely home your own.

SITUATION



Directions