



## Crop Leaze

Stoke Gifford, Bristol, BS34 8BT

**£2,500 Per Calendar Month**

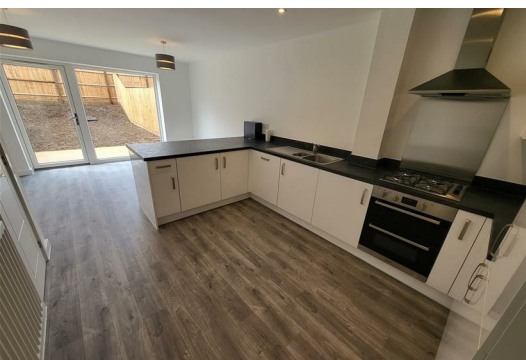


We are delighted to offer this fantastic four bedroom home in the brand new estate of Brooklands Park, just off Stoke Gifford, North Bristol. Close to local amenities and major road links this is a fantastic opportunity.

This delightful town house over three levels consists of entrance hallway, dining room and kitchen plus study room and W.C. The first level consists of living room and bedroom with En-Suite. The top level consists of three bedrooms, one double and two single bedrooms plus family bathroom.

The property also benefits from Electric charge point on the drive way with large garage with power.

If your looking for a long term family rental this is ideal!



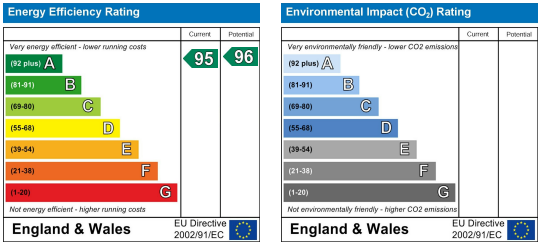
Area Map



Floor Plans



Energy Efficiency Graph



These particulars, whilst believed to be accurate are set out as a general outline only for guidance and do not constitute any part of an offer or contract. Intending purchasers should not rely on them as statements of representation of fact, but must satisfy themselves by inspection or otherwise as to their accuracy. No person in this firms employment has the authority to make or give any representation or warranty in respect of the property.