

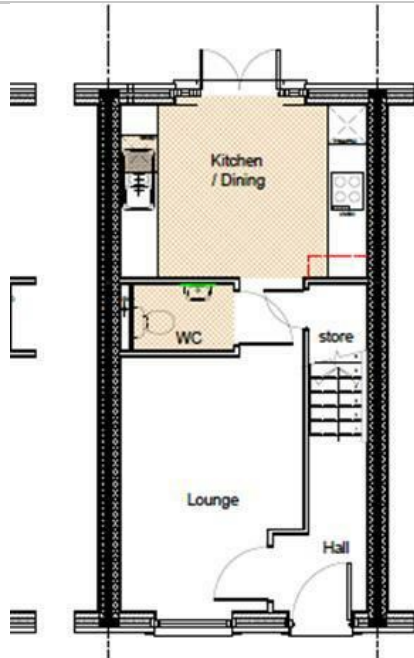


23 Orb Drive, Newport, NP19 0RA

£1,350 Per Calendar Month



- Available 08/08/2025
- En-suite bathroom
- Newport
- 3 Bedroom
- Semi detached
- EV Charger Point



Directions

THE PROPERTY

Available 08/08/2025

A recent survey by a house building federation shows that new houses are 65% more efficient than older properties of the same size!

Bandmaster Court in Newport is another brand-new development by Eden Homes, one of the UK leading house builders known for their quality and attention to detail.

The 'Tetford' is a 3 bedroom, semi detached with a large lounge, luxury kitchen, enclosed rear garden, parking and electric vehicle charging points. Each property has a family bathroom, a separate WC and an en-suite bathroom. As you would expect from a brand-new home, the property has the latest gas central heating with high tech thermostats, excellent energy saving double glazing and they come complete with white goods.

Images for marketing purposes only - similar properties by the same developer

SITUATION